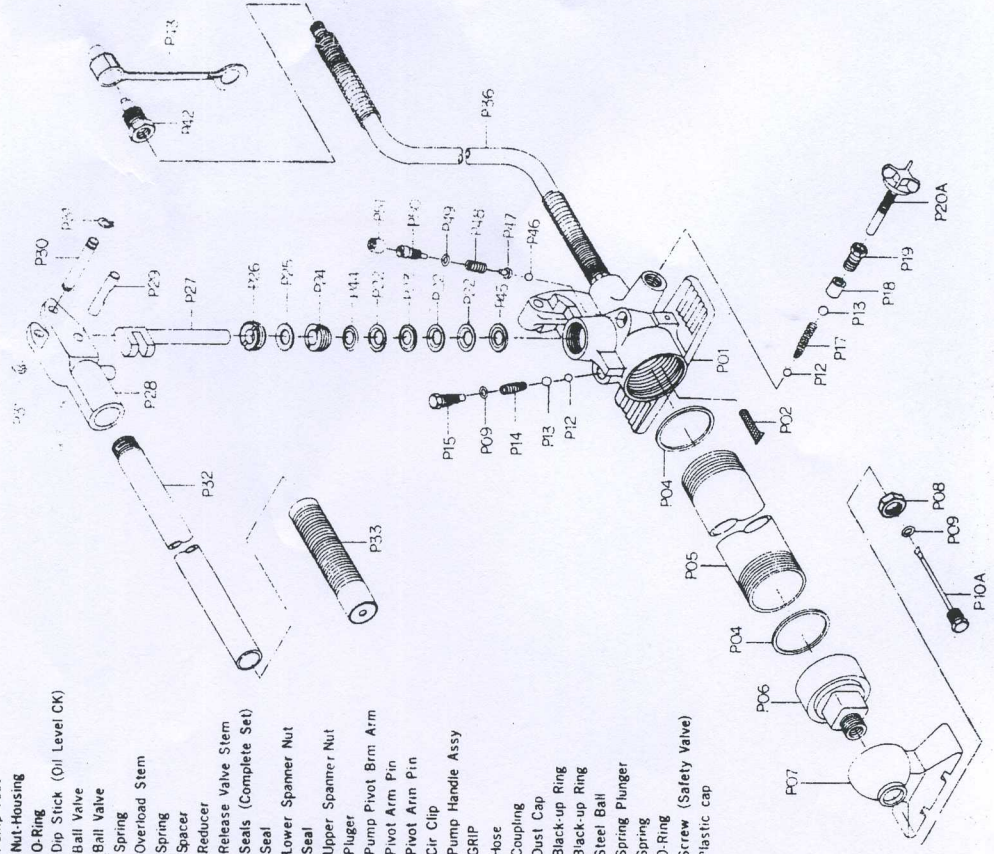


LATEST (Latest)
FROM
 (Stamp) 9/199

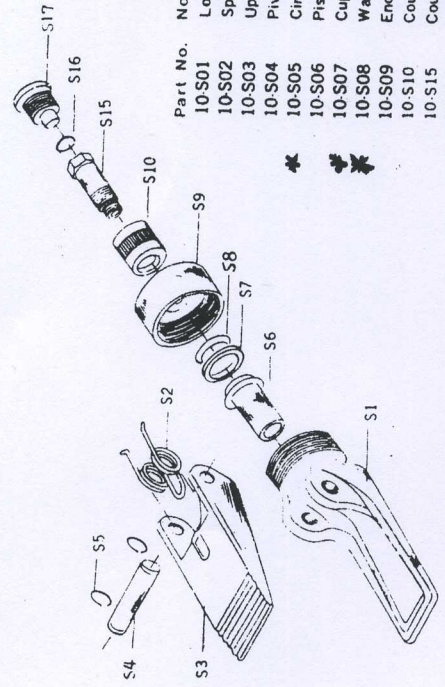
**10 TON CAPACITY
 HYDRAULIC BODY FRAME
 REPAIR PUMP & HOSE ASSEMBLY
 PART NO. RE83/610-40 & 42**

Part No.	Nomenclature
10-P01	Pump Housing
10-P02	Filter
10-PC4	Seal
10-P05	Pump Reservoir
10-P06	Reservoir End Cap
10-P07	Pump Foot
10-P08	Nut-Housing
10-P09	O-Ring
10-P10	Dip Stick (Oil Level CK)
10-P12	Ball Valve
10-P13	Ball Valve
10-P14	Spring
10-P15	Overload Stem
10-P17	Spring
10-P18	Spacer
10-P19	Reducer
10-P20	Release Valve Stem
10-P22	Seals (Complete Set)
10-P23	Seal
10-P24	Lower Spanner Nut
10-P25	Seal
10-P26	Upper Spanner Nut
10-P27	Plunger
10-P28	Pump Pivot Brm Arm
10-P29	Pivot Arm Pin
10-P30	Pivot Arm Pin
10-P31	Cir Clip
10-P32	Pump Handle Assy
10-P33	GRIP
10-P36	Hose
10-P42	Coupling
10-P43	Dust Cap
10-P44	Black-up Ring
10-P45	Black-up Ring
10-P46	Steel Ball
10-P47	Spring Plunger
10-P48	Spring
10-P49	O-Ring
10-P50	Screw (Safety Valve)
10-P51	Plastic cap



**1/2 TON CAPACITY
 HYDRAULIC SPREADER ASSEMBLY
 PART NO. RE83/610-11**

Part No.	Nomenclature
10-S01	Lower Duck Bill
10-S02	Spring
10-S03	Upper Duck Bill
10-S04	Pivoting Pin
10-S05	Cir Clips (2Req.)
10-S06	Piston
10-S07	Cup Seal
10-S08	Washer
10-S09	End Cap
10-S10	Coupling Ring
10-S15	Coupling Bolt
10-S16	Bolt O-Ring
10-S17	Dust Cap



**10 TON CAPACITY
 HYDRAULIC RAM ASSEMBLY
 PART NO. RE83/610-41**

Part No.	Nomenclature
10-R1	Base
10-R2	Cylinder
10-R4	Ram
10-R5	Bearing
10-R6	Bushing
10-R7	Cap (Nylon)
10-R8	Cap (Tetlon)
10-R9	Cap (Uletan)
10-R10	Spreader
10-R11	Washer
10-R12	Nut
10-R13	Spring
10-R14	Screw
10-R15	Ring
10-R16	Protecting Cap
10-R17	Saddle
10-R18	Bushing
10-S10	Coupling Ring
10-S15	Coupling Bolt
10-S16	Bolt O-Ring
10-S17	Dust Cap

