

fig. 1

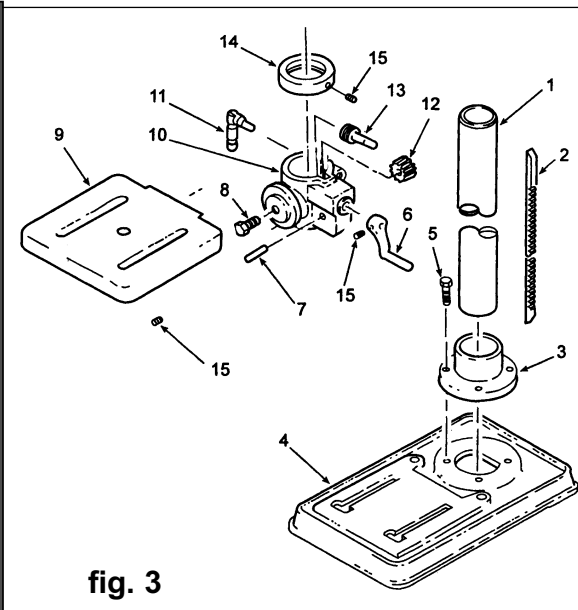


fig. 3

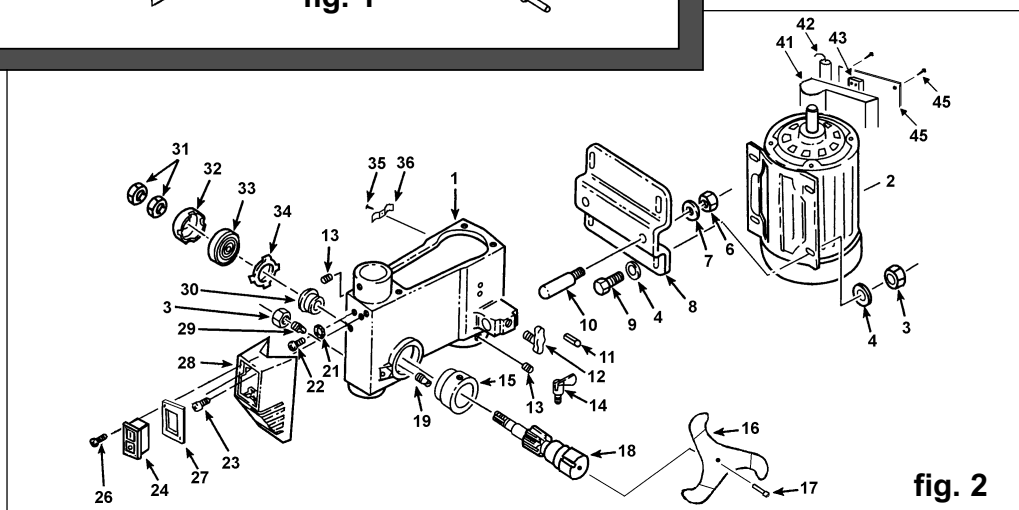


fig. 2

Issue: 3
Date: 231002

Fig. 1

| Item | Part No. | Description |
|------|--------------|------------------------------------|
| 1 | PDM100B-1-01 | Screw, M5 |
| 2 | PDM100B-1-02 | Pivot, Idler |
| 3 | PDM100B-1-03 | Pulley, Centre |
| 4 | PDM100B-1-04 | Bearing, 15mm |
| 5 | PDM100B-1-05 | V Belt |
| 6 | PDM100B-1-06 | Pulley Guard |
| 7 | PDM100B-1-07 | Pulley, Motor |
| 8 | PDM100B-1-08 | Screw, M6 x 10 |
| 9 | PDM100B-1-09 | Screw, M6 x 12 |
| 10 | PDM100B-1-10 | Washer, Foam |
| 11 | PDM100B-1-11 | Ring, Retaining |
| 12 | PDM100B-1-12 | Gasket, Quill |
| 13 | PDM100B-1-13 | Bearing, 12mm |
| 14 | PDM100B-1-14 | Tube, Quill |
| 15 | PDM100B-1-15 | Ring, Retaining |
| 16 | PDM100B-1-16 | Bearing, 17mm |
| 17 | PDM100B-1-17 | Spacer |
| 18 | PDM100B-1-18 | Insert, Pulley (inc. key, 15 & 20) |
| 19 | PDM100B-1-19 | Pulley, Spindle |
| 20 | PDM100B-1-20 | Nut, Pulley |
| 21 | PDM100B-1-21 | Bearing, 20mm |
| 22 | PDM100B-1-22 | Spindle |
| 23 | PDM100B-1-23 | Arbor |
| 24 | PDM100B-1-24 | Chuck |
| 25 | PDM100B-1-25 | Key, Chuck |
| 26 | PDM100B-1-MS | Micro switch |

Fig. 2

| Item | Part No. | Description |
|------|--------------|----------------------------|
| 1 | PDM100B-2-01 | Head, cw Pointer & Trim |
| 2 | PDM100B-2-02 | Motor |
| 3 | PDM100B-2-03 | Nut, Hex. M8 |
| 4 | PDM100B-2-04 | Washer, 8 x 1.6 x 16mm |
| 6 | PDM100B-2-06 | Nut, Hex. M10 |
| 7 | PDM100B-2-07 | Lock Washer, M10 |
| 8 | PDM100B-2-08 | Bracket Motor |
| 9 | PDM100B-2-09 | Screw, HH M8 x 1.25-20 |
| 10 | PDM100B-2-10 | Support, Motor Bracket |
| 11 | PDM100B-2-11 | Roll Pin, 6 x 16mm |
| 12 | PDM100B-2-12 | Knob, Motor Adjusting |
| 13 | PDM100B-2-13 | Screw, HS M8 x 1.25-8 |
| 14 | PDM100B-2-14 | Lock, Depth Screw |
| 15 | PDM100B-2-15 | Ring, Depth Stop cw Scale |
| 16 | PDM100B-2-16 | Handle |
| 17 | PDM100B-2-17 | Bolt, Handle |
| 18 | PDM100B-2-18 | Hub, Pinion |
| 19 | PDM100B-2-19 | Pin, Stop |
| 21 | PDM100B-2-21 | Lock Washer, External 5mm |
| 22 | PDM100B-2-22 | Screw, PH M5 x 0.8-8 |
| 23 | PDM100B-2-23 | Screw, PH M5 x 0.8-12 |
| 24 | PDM100B-2-24 | No-Volt Switch |
| 26 | PDM100B-2-26 | Screw, ST PH M4 x 16-8 |
| 27 | PDM100B-2-27 | Plate, Switch Cover |
| 28 | PDM100B-2-28 | Box, Switch |
| 29 | PDM100B-2-29 | Screw, Spec1 M8 x 1.25 x 8 |
| 30 | PDM100B-2-30 | Seat, Spring |
| 31 | PDM100B-2-31 | Nut, Hex. M12 x 1.5-8 |

Fig. 2 Continued

| Item | Part No. | Description |
|------|--------------|------------------|
| 32 | PDM120B-2-32 | Cap, Spring |
| 33 | PDM120B-2-33 | Spring, Torsion |
| 34 | PDM120B-2-34 | Retainer, Spring |
| 35 | PDM120B-2-35 | Screw |
| 36 | PDM120B-2-36 | Clamp, Cord |
| 41 | PDM120B-2-41 | Terminal Box |
| 42 | PDM120B-2-42 | Capacitor |
| 43 | PDM120B-2-43 | Terminal Block |
| 44 | PDM120B-2-44 | Cover, Box |
| 45 | PDM120B-2-45 | Screw |

Fig. 3

| Item | Part No. | Description |
|------|--------------|-------------------------|
| 1 | PDM100B-3-01 | Tube, Column |
| 2 | PDM100B-3-02 | Rack |
| 3 | PDM100B-3-03 | Support, Column |
| 4 | PDM100B-3-04 | Base |
| 5 | PDM100B-3-05 | Screw, HH M8 x 1.25-20 |
| 6 | PDM100B-3-06 | Crank |
| 7 | PDM100B-3-07 | Shaft, Gear |
| 8 | PDM100B-3-08 | Screw, HH M12 x 1.75-22 |
| 9 | PDM100B-3-09 | Table |
| 10 | PDM100B-3-10 | Support, Table cw Scale |
| 11 | PDM100B-3-11 | Clamp, Table |
| 12 | PDM100B-3-12 | Gear, Helical |
| 13 | PDM100B-3-13 | Worm, Elevation |
| 14 | PDM100B-3-14 | Collar, Rack |
| 15 | PDM100B-3-15 | Screw, HS M6 x 1.0-10 |



01284 757500



01284 703534

E-mail: sales@sealey.co.uk

Web: www.sealey.co.uk