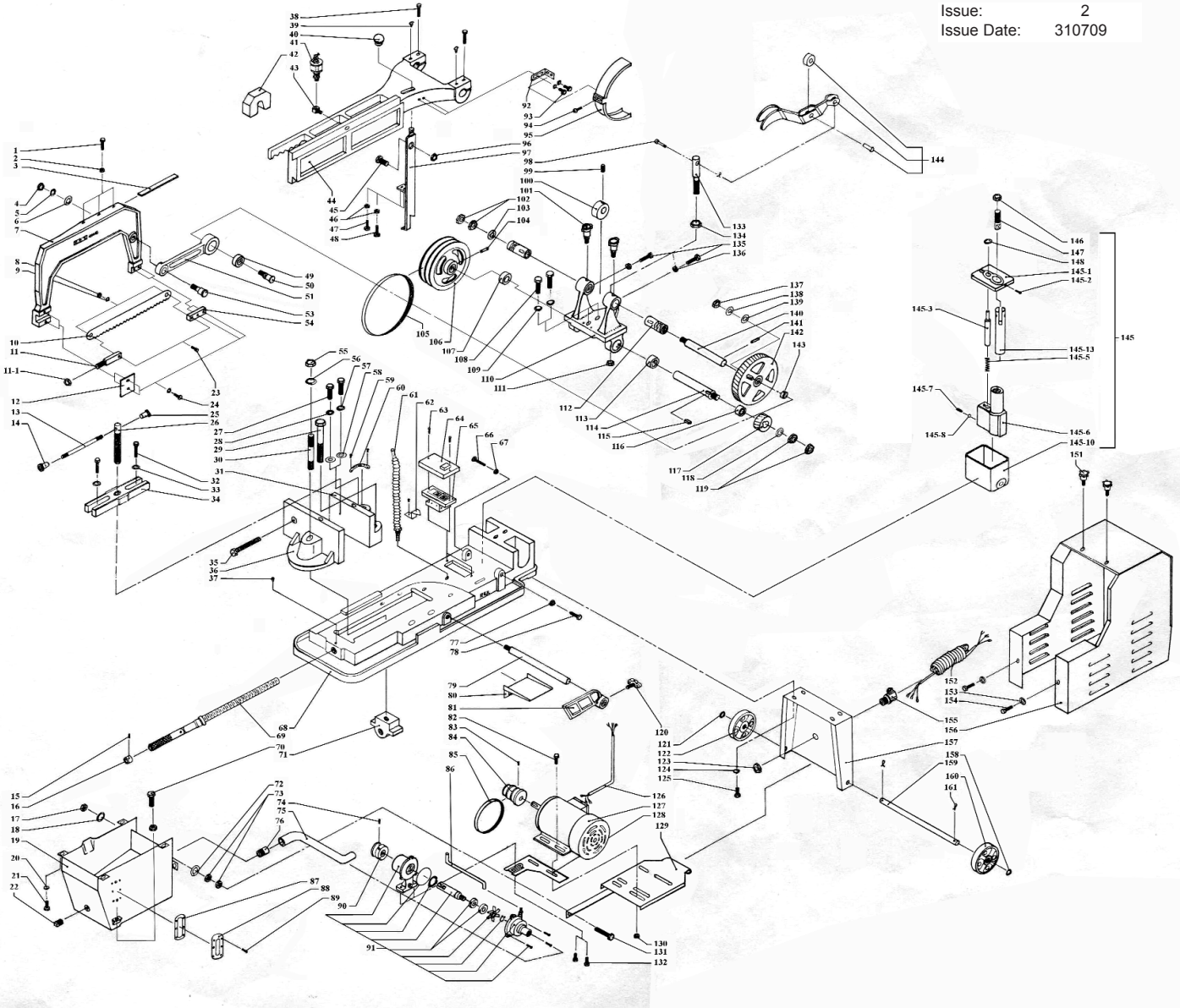


Issue: 2  
 Issue Date: 310709



**NOTE:** It is our policy to continually improve products and as such we reserve the right to alter data, specifications and component parts without prior notice.

**IMPORTANT:** No liability is accepted for incorrect use of product.

**WARRANTY:** Guarantee is 12 months from purchase date, proof of which will be required for any claim.

**INFORMATION:** For a copy of our latest catalogue and promotions call us on 01284 757525 and leave your full name and address, including postcode.



PARTS FOR:  
**POWER HACKSAW 200mm CAPACITY WITH COOLANT SYSTEM**  
**MODEL: SM18/1.V2**

2 OF 2

ITEM	PART NO	DESCRIPTION	ITEM	PART NO	DESCRIPTION
1	SM18R/0001	BOLT	84	SM18R/0084	MOTOR PULLEY
2	SM18R/0002	NUT 1/4"	85	V/M16	V-BELT M-16 (Z378/Z14)
3	SM18R/0003	SLIDE	86	SM18R/0086	PVC HOSE
4	SM18R/0004	NUT 1/2" NF	87	SM18R/0087	OIL GAUGE PACKING
5	SM18R/0005	S. WASHER 1/2"	88	SM18R/0088	OIL GAUGE
6	SM18R/0006	PLATE WASHER 1/2"	89	SM18R/0089	BOLT 1/8"x1/2"
7	SM18R/0007	BOW SAW	90	SM18R/0090	PUMP PULLEY
8	SM18R/0008	NUT 1/4"	91	SM18R/0091	PUMP, COOLANT
9	SM18R/0009	SPRING WASHER 1/4"	92	SM18R/0092	C TYPE GEAR GUARD BRACKET
10	SM18/B	POWER HACKSAW BLADE 16 x 1-1.4 x 0.62" 14	93	SM18R/0093	BOLT 5/16"x3/4"
	SM18/B24	P'SAWBLADE 16x1-1/4x.062"24tpi (optional)	94	SM18R/0094	BOLT 1/4"x1/4"
11	SM18R/0011	BLADE ADJUST SCREW	95	SM18R/0095	C-TYPE REAR GUARD
11-1	SM18R/0011-1	BLADE ADJUST NUT FOR SCREW	96	SM18R/0096	NUT 1/2"NC
12	SM18R/0012	PLATE	97	SM18R/0097	SWITCH BAR
13	SM18R/0013	HANDLE	98	SM18R/0098	CUP HEAD PIN
14	SM18R/0014	KNOB	99	SM18R/0099	SET SCREW M10xP1.5x10
15	SM18R/0015	SOCKET HEADLESS SET SCREW	100	SM18R/0100	CAM
16	SM18R/0016	COLLAR STOP	101	SM18R/0101	OIL CUP
17	SM18R/0017	NUT 1/2" NC	102	SM18R/0102	NUT 1/2"NF
18	SM18R/0018	S. WASHER 1/2"	103	SM18R/0103	WASHER
19	SM18R/0019	TANK	104	SM18R/0104	SPRING PIN
20	SM18R/0020	WASHER	105	V/A34	V-BELT A-34 (A-880)
21	SM18R/0021	BOLT 5/16"x1/2"	106	SM18R/0106	PULLEY
22	SM18R/0022	DRAIN PLUG 1/2"	107	B/6204Z	BEARING
23	SM18R/0023	SOCKET HEAD SET SCREW 1/4"x3/4	108	SM18R/0108	BOLT 1/2"x1-1/2"
24	SM18R/0024	BOLT 1/4"x3/4"	109	SM18R/0109	S. WASHER 1/2"
25	SM18R/0025	KNOB	110	SM18R/0110	FRAME SUPPORT
26	SM18R/0026	SCREW	111	SM18R/0111	NUT 5/8"
27	SM18R/0027	BOLT 1/2"x1-1/2"	112	SM18R/0112	BUSHING
28	SM18R/0028	SPRING WASHER 1/2"	113	B/6204-2RS	BEARING
29	SM18R/0029	BOLT 5/8"x3-1/2"	114	SM18R/0114	SHAFT
30	SM18R/0030	BOLT 5/8"x98mm	115	SM18R/0115	KEY 1/4"
31	SM18R/0031	FIXED VICE	116	SM18R/0116	PIPE CASING
32	SM18R/0032	BOLT 5/16"x1-1/2"	117	SM18R/0117	SMALL GEAR (20T)
33	SM18R/0033	FLAT WASHER 3/8"	118	SM18R/0118	WASHER 1/2"
34	SM18R/0034	PLATE	119	SM18R/0119	NUT 1/2" NF
35	SM18R/0035	BOLT 1/2"x3"	120	SM18R/0120	"T" HEAD BOLT
36	SM18R/0036	FREE VICE	121	SM18R/0121	SPRING WASHER 1/2"
37	SM18R/0037	OILER	122	SM18R/0122	WHEEL
38	SM18R/0038	BOLT 1/4"x1"	123	SM18R/0123	FIXTURE NUT
39	SM16-17R/0017	OIL CAP	124	SM18R/0124	S. WASHER 5/16"
40	SM18R/0040	KNOB	125	SM18R/0125	BOLT 5/16"x3/4"
41	SM18R/0041	GLASS OILER	126	SM18R/0126	MOTOR WIRE
42	SM18R/0042	WEIGHT	127	SM18R/0127	MOTOR
43	SM18R/0043	L-TYPE JOINT	128	SM18R/0128	PUMP MOUNT
44	SM18R/0044	SAW ARM	129	SM18R/0129	MOUNT
45	SM18R/0045	BOLT 1/2"x1"	130	SM18R/0130	NUT 5/16"
46	SM18R/0046	NUT	131	SM18R/0131	BOLT 1/2"x2-1/2"
47	SM18R/0047	BOLT 1/4"x1"	132	SM18R/0132	BOLT 5/16"x3/4"
48	SM18R/0048	BOLT 1/4"x1-1/4"	133	SM18R/0133	BRACKET
49	SM18R/0049	BEARING	134	SM18R/0134	NUT 5/8"
50	SM18R/0050	LINK SCREW (GEAR)	135	SM18R/0135	BOLT 3/8"x1-1/2"
51	SM18R/0051	CONNECTING ROD	136	SM18R/0136	NUT 3/8"
53	SM18R/0053	LINK SCREW (BOW SAW)	137	SM18R/0137	NUT 1/2" NF
54	SM18R/0054	BLADE FIXED PLATE	138	SM18R/0138	SPRING WASHER 1/2"
55	SM18R/0055	NUT 5/8"	139	SM18R/0139	PLAIN WASHER 1/2"
56	SM18R/0056	S. WASHER 5/8"	140	SM18R/0140	GEAR SHAFT
57	SM18R/0057	WASHER 1/2"	141	SM18R/0141	SPRING PIN
58	SM18R/0058	WASHER	142	SM18R/0142	GEAR 122T
59	SM18R/0059	RIVET	143	SM18R/0143	CASING FOR LINK SCREW
60	SM18R/0060	DIAPHRAGM	144	SM18R/0144	COMPRESSING ARM
61	SM18R/0061	WATER NOZZLE	145	SM18R/0145	HYD PUMP SET
	SM18R/0061-1	VALVE FOR WATER NOZZLE (not shown)	145-1	SM18R/0145-11	COVER,TANK
62	SM18R/0062	INDICATING NEEDLE	145-2	SM18R/0145-12	SCREW
63	SM18R/0063	BOLT 3/16"x3/4"	145-3	SM18R/0145-3	CONTROL PISTON
64	SM18R/0064	SWITCH COVER	145-5	SM18R/0145-14	SPRING
65	SM18R/0065NLV	SWITCH NO-LOAD VOLTAGE	145-6	SM18R/0145-17	BODY
66	SM18R/0066	BOLT 5/16"x1-1/2"	145-7	SM18R/0145-7	HEADLESS SOCKET SCREW
67	SM18R/0067	NUT 5/16"	145-8	SM18R/0145-8	BALL
68	SM18R/0068	BED	145-10	SM18R/0145-10	TANK
69	SM18R/0069	LEADING SCREW	145-13	SM18R/0145-13	RAM PISTON
70	SM18R/0070	BOLT 1/2"x1-1/4"	146	SM18R/0146	NUT 1/2"NC
71	SM18R/0071	SCREW SET	147	SM18R/0147	BOLT
72	SM18R/0072	SPRING WASHER 1/2"	148	SM18R/0148	WASHER
73	SM18R/0073	NUT 1/2"NC	151	SM18R/0151	SCREW
74	SM18R/0074	SOCKET HEADLESS SET SCREW 1/4"	152	SM18R/0152	MAINS CABLE
75	SM18R/0075	PVC HOSE	153	SM18R/0153	PLATE WASHER 5/16"
76	SM18R/0076	WATER INLET SCREW	154	SM18R/0154	BOLT 5/16"x1/2"
77	SM18R/0077	NUT 5/16"	155	SM18R/0155	CABLE FIXTURE
78	SM18R/0032	BOLT 5/16"x1-1/2"	156	SM18R/0156	GUARD
79	SM18R/0079	LENGTH BAR	157	SM18R/0157	SUPPORT
80	SM18R/0080	WATER BAFFLE	158	SM18R/0158	S.WASHER 1/2"
81	SM18R/0081	LENGTH FIXING PLATE	159	SM18R/0159	SHAFT
82	SM18R/0082	BOLT 5/16"x3/4"	160	SM18R/0160	WHEEL
83	SM18R/0083	SET SCREW 5/16"x3/4"	161	SM18R/0161	COTTER PIN 3/32"

**NOTE:** It is our policy to continually improve products and as such we reserve the right to alter data, specifications and component parts without prior notice.

**IMPORTANT:** No liability is accepted for incorrect use of product.

**WARRANTY:** Guarantee is 12 months from purchase date, proof of which will be required for any claim.

**INFORMATION:** For a copy of our latest catalogue and promotions call us on 01284 757525 and leave your full name and address, including postcode.



Sole UK Distributor  
**Sealey Group,**  
 Bury St. Edmunds, Suffolk.



01284 757500



01284 703534



[www.sealey.co.uk](http://www.sealey.co.uk)



[sales@sealey.co.uk](mailto:sales@sealey.co.uk)