

NOTE: It is our policy to continually improve products and as such we reserve the right to alter data, specifications and component parts without prior notice. There may be alternative versions of this product, please contact us should you require this information.

IMPORTANT: No liability is accepted for incorrect use of product. Spare parts must be fitted by a competent person

WARRANTY: Guarantee is 12 months from purchase date, proof of which will be required for any claim.



Parts Information:
2-Stroke Petrol Post Driver 100mm
Model No: PPD100

Item	Part No.	Description
1	PPD100.01	Petrol Engine 52cc
2	SCB625.SB	Socket Cap Bolt M6 x 25mm Black
3	SCB620.SB	Socket Cap Bolt M6 x 20mm Black
4	PPD100.04	Gearbox
5	B/6202ZZ	Bearing 6202zz
6	PPD100.06	Driven Disc
7	B/6205ZZ	Bearing 6205zz
8	PPD100.08	Impact Crankshaft
9	PPD100.09	Crankshaft Retainer
10	PPD100.10	Elastic Washer (8 x 2.1mm)
11	SCB820.SB	Socket Cap Bolt M8 x 20mm Black
12	PPD100.12	Oil Storage Box Seal
13	SCB520.SB	Socket Cap Bolt M5 X 20mm Black
14	PPD100.14	Oil Storage Box Lid
15	PPD100.15	Machine Screw M5 x 20
16	PPD100.16	O-Ring (18 x 2.65mm)
17	PPD100.17	Oil Plug M20 x 1.5
18	PPD100.18	Impact Connecting Rod
19	PPD100.19	Oval Ring 35.5 x 45.5 x 6mm
20	PPD100.20	Impact Piston
21	PPD100.21	Impact Piston Pin
22	PPD100.22	O-ring (35.5 x 5mm)
23	PPD100.23	Impact Cylinder
24	PPD100.24	Aluminium Hammer Case
25	SCB835.SB	Socket Cap Bolt M8 X 35mm Black
26	PPD100.26	Iron Ring
27	PPD100.27	Vibration Absorption Ring (Small)
28-30	PPD100.28-30	Handle Sleeve (c/w Rubber Split Ring)
31	PPD100.31	Vibration Absorption Ring (Large)
32	PPD100.32	O-ring (33 x 4mm)
33	PPD100.33	Hammer Shaft
34	PPD100.34	Support Plate

Item	Part No.	Description
35	PPD100.35	Hex Flange Nut M18 x 1.5
36	PPD100.36	Shock Guide Sleeve
37	PPD100.37	Driving Sleeve
38	SCB840.SB	Socket Cap Bolt M8 x 40mm Black
39	PPD100.39	Driving Sleeve Head
40	PPD100.40	Pile Socket Retainer
41	PPD100.41	Positioning Sleeve
42	PPD100.42	Compression Spring (22.5 x 27.5 x 60mm)
43	PPD100.43	Switch Handle Guide Sleeve
44	PPD100.44	Combination Switch
45	PPD100.45	Connecting Thread Head
46	PPD100.46	Compression Spring (22.5 x 27.5 x 123mm)
47	PPD100.47	Step Nut
48	PPD100.48	Handle Sleeve
49	SCB640.SB	Socket Cap Bolt M6 x 40mm Black
50	PPD100.50	Steel Tube Handle
51	PPD100.51	Handle Sleeve Foam
52	PPD100.52	Gear (Large)
53	MSC510.SB	Csk Phillips Machine Screw M5 X 10 Black
54	PPD100.54	Bearing Holder
55	B/6204-2RS	Bearing 6204-2rs
56	PPD100.56	Gear Shaft
57	PPD100.57	Middle Gear
58	B/6203-2RS	Bearing 6203-2rs
59	PPD100.59	Shaft Retainer
60	PPD100.60	Internal Circlip
61	PPD100.61	Gearbox Cover Seal
62	PPD100.62	Gearbox Cover
63	SCB616.SB	Socket Cap Bolt M6 x 16mm Black
64	PPD100.64	Internal Circlip
65	PPD100.65	Gear (Small)

NOTE: It is our policy to continually improve products and as such we reserve the right to alter data, specifications and component parts without prior notice. There may be alternative versions of this product, please contact us should you require this information.

IMPORTANT: No liability is accepted for incorrect use of product. Spare parts must be fitted by a competent person

WARRANTY: Guarantee is 12 months from purchase date, proof of which will be required for any claim.

Sealey Group, Kempson Way, Suffolk Business Park, Bury St Edmunds, Suffolk. IP32 7AR



01284 757500



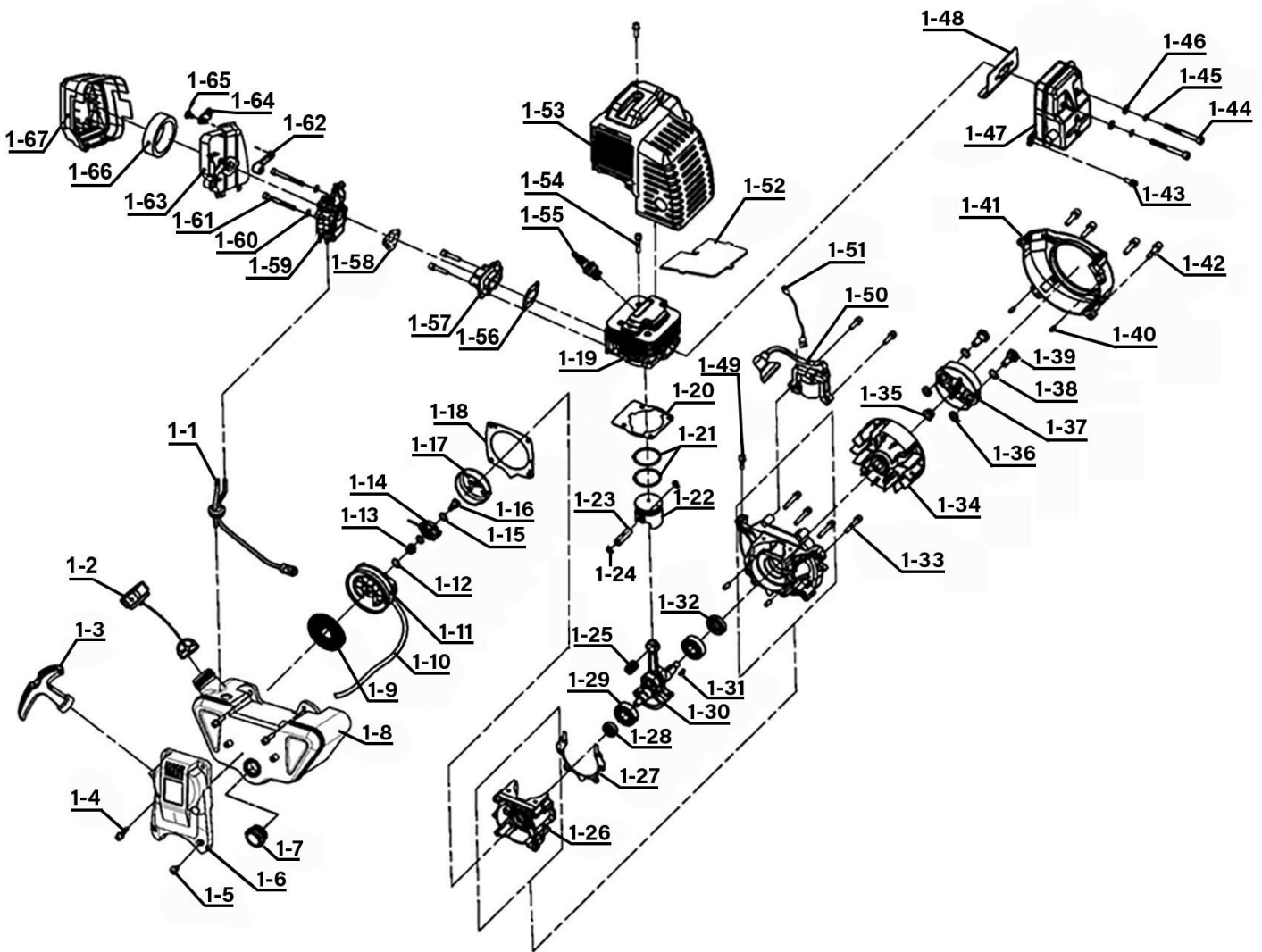
01284 703534



sales@sealey.co.uk



www.sealey.co.uk



Item	Part No.	Description
1-1	PPD100.01-1	Oiler Assembly
1-2	PPD100.01-2	Fuel Tank Cap Assembly
1-3	PPD100.01-3	Start Handle
1-4	SCB520.S	Socket Cap Bolt M5 x 20mm
1-5	PPD100.01-5	Countersunk Tapping Screw ST4.8 x 13
1-6	PPD100.01-6	Starter Shroud
1-7	PPD100.01-7	Oil View Glass
1-8	PPD100.01-8	Fuel Tank
1-9	PPD100.01-9	Recoil Starter Disc Spring
1-10	PPD100.01-10	Recoil Starter Rope

Item	Part No.	Description
1-11	PPD100.01-11	Recoil Starter Rope Wheel
1-12	PPD100.01-12	Washer
1-13	PPD100.01-13	Recoil Starter Spring
1-14	PPD100.01-14	Recoil Starter Pawl Assembly
1-15	PPD100.01-15	Washer
1-16	PPD100.01-16	Recoil Starter Jaw Screw
1-17	PPD100.01-17	Recoil Starter Dial Disc
1-18	PPD100.01-18	Recoil Starter Gasket
1-19	PPD100.01-19	Cylinder
1-20	PPD100.01-20	Cylinder Gasket

NOTE: It is our policy to continually improve products and as such we reserve the right to alter data, specifications and component parts without prior notice. There may be alternative versions of this product, please contact us should you require this information.

IMPORTANT: No liability is accepted for incorrect use of product. Spare parts must be fitted by a competent person

WARRANTY: Guarantee is 12 months from purchase date, proof of which will be required for any claim.



Parts Information:
2-Stroke Petrol Post Driver 100mm
Model No: PPD100

Item	Part No.	Description
1-21	PPD100.01-21	Piston Ring
1-22	PPD100.01-22	Piston
1-23	PPD100.01-23	Piston Pin
1-24	PPD100.01-24	Clamping Spring
1-25	PPD100.01-25	Needle Roller Bearing (HK101316)
1-26	PPD100.01-26	Crankcase (Left/Right)
1-27	PPD100.01-27	Crankcase Sealing Gasket
1-28	PPD100.01-28	Oil Seal (12 x 22 x 7mm)
1-29	B/6202	Bearing 6202
1-30	PPD100.01-30	Crankshaft Assembly
1-31	PPD100.01-31	Woodruff Key 3 x 5 x 13
1-32	PPD100.01-32	Oil Seal 15 x 30 x 7
1-33	SCB535.S	Socket Cap Screw M5 x 35mm
1-34	PPD100.01-34	Magnetic Flywheel
1-35	FN8.S	Flange Nut Serrated M8 Zinc
1-36	PPD100.01-36	Washer (8.5 x 15 x 1.6)
1-37	PPD100.01-37	Shoe Spring
1-38	PPD100.01-38	Wave Washer (10.5 x 15 x 0.5)
1-39	PPD100.01-39	Shaft Screw M8 x 10
1-40	PPD100.01-40	Positioning Pin dia. 5 x 10
1-41	PPD100.01-41	Wind Guard
1-42	SCB625.S	Socket Cap Bolt M6 x 25mm
1-43	SCB514.S	Socket Cap Bolt M5 x 14mm
1-44	SCB655.SB	Socket Cap Bolt M6 X 55mm Black

Item	Part No.	Description
1-45	PPD100.01-45	Elastic Washer (6 x 1.6mm)
1-46	PPD100.01-46	Plain Washer (6 x 1.6mm)
1-47	PPD100.01-47	Silencer
1-48	PPD100.01-48	Silencer Gasket
1-49	SCB516.S	Socket Cap Bolt M5 x 16mm
1-50	PPD100.01-50	Ignitor Assembly
1-51	PPD100.01-51	Stop Wire
1-52	PPD100.01-52	Cover Plate
1-53	PPD100.01-53	Cover
1-54	SCB525.S	Socket Cap Bolt M5 x 25mm
1-55	PPD100.01-55	Spark Plug
1-56	PPD100.01-56	Inlet Pipe Gasket
1-57	PPD100.01-57	Inlet Pipe
1-58	PPD100.01-58	Carburettor Gasket
1-59	PPD100.01-59	Carburettor
1-60	PPD100.01-60	Plain Washer (5 x 12 x 1mm)
1-61	PPD100.01-61	Socket Cap Bolt M5 x 50
1-62	PPD100.01-62	Throttle Switch
1-63	PPD100.01-63	Air Filter Seat
1-64	PPD100.01-64	Air Filter Seat Stopper
1-65	MSC48.S	Csk Phillips Machine Screw M4 X 8 Zinc
1-66	PPD100.01-66	Filter Screen
1-67	PPD100.01-67	Air Filter Cover

NOTE: It is our policy to continually improve products and as such we reserve the right to alter data, specifications and component parts without prior notice. There may be alternative versions of this product, please contact us should you require this information.

IMPORTANT: No liability is accepted for incorrect use of product. Spare parts must be fitted by a competent person

WARRANTY: Guarantee is 12 months from purchase date, proof of which will be required for any claim.

Sealey Group, Kempson Way, Suffolk Business Park, Bury St Edmunds, Suffolk. IP32 7AR



01284 757500



01284 703534



sales@sealey.co.uk



www.sealey.co.uk