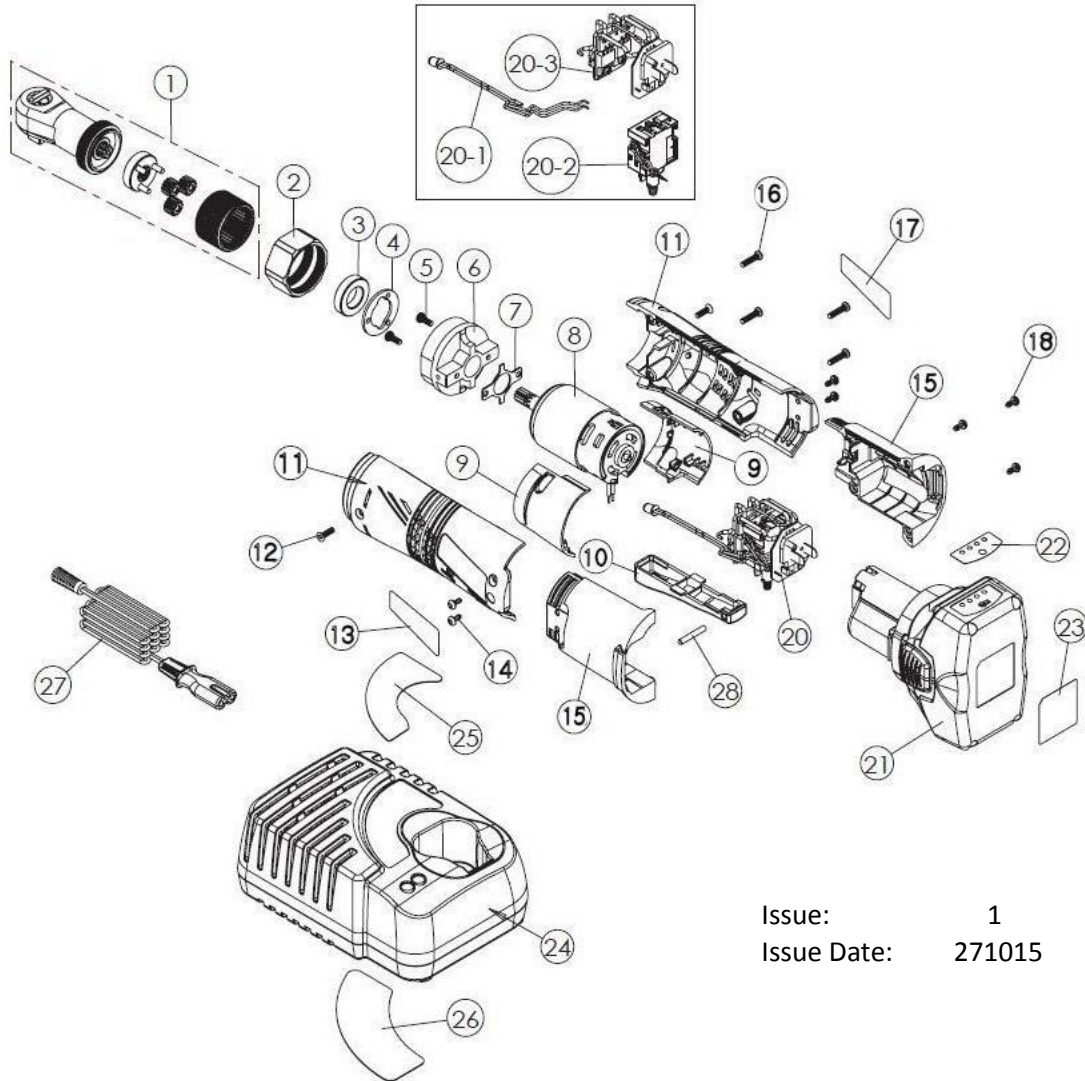




**PARTS FOR:**

CORDLESS LITHIUM-ION RATCHET WRENCH 14.4V 2Ah 3/8"SQ  
DRIVE 60Nm 4-POLE MOTOR – 2 BATTERIES 40MIN CHARGER

**MODEL : CP6002**



Issue: 1  
Issue Date: 271015

**ITEM PART NO DESCRIPTION**

- 1 CP6002.01 RATCHET HEAD ASS'Y
- 2 CP6002.02 NUT
- 3 CP6002.03 BUSH
- 4 CP6002.04 WASHER
- 5 CP6002.05 SCREW
- 6 CP6002.06 MOTOR BLOCK
- 7 CP6002.07 WASHER
- 8 CP6002.08 MOTOR ASS'Y
- 9 CP6002.09 INSULATION ASS'Y
- 10 CP6002.10 TRIGGER
- 11 CP6002.11 HOUSING ASS'Y
- 12 CP6002.12 SCREW
- 13 CP6002.13 HOUSING LABEL (LEFT SIDE)
- 14 CP6002.14 SCREW
- 15 CP6002.15 BATTERY HOUSING ASS'Y
- 16 CP6002.16 SCREW

**ITEM PART NO DESCRIPTION**

- 17 CP6002.17 HOUSING LABEL (RIGHT SIDE)
- 18 CP6002.18 SCREW
- CP6002.19 HEAT SHRINKING TUBE (**NOT SHOWN**)
- 20 CP6002.20 PCB ASS'Y
- 20-1 CP6002.20-1 LED ASS'Y
- 20-2 CP6002.20-2 MAIN SWITCH
- 20-3 CP6002.20-3 DISCHARGE PROTECTOR
- 21 CP60BP LITHIUM-ION BATTERY 14.4V 2AH
- 22 CP6002.22 BATTERY INDICATOR LABEL
- 23 CP6002.23 BATTERY LABEL
- 24 CP60MC LITHIUM-ION BATTERY CHARGER 14.4V 40MIN
- 25 CP6002.25 CHARGER LABEL (UPPER)
- 26 CP6002.26 CHARGER LABEL (LOWER)
- 27 CP6002.27 POWER CORD
- 28 CP6002.28 PIN



Sole Uk Distributor  
Sealey Group, Kempson Way,  
Suffolk Business Park,  
Bury St Edmunds, Suffolk. IP32 7AR

01284 757500  
01284 703534

www.sealey.co.uk  
sales@sealey.co.uk