

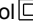
Thank you for purchasing a Sealey product. Manufactured to a high standard this product will, if used according to these instructions and properly maintained, give you years of trouble free performance.

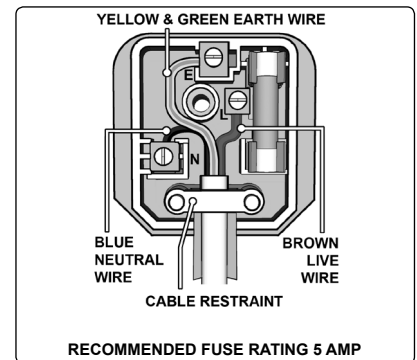


**IMPORTANT: PLEASE READ THESE INSTRUCTIONS CAREFULLY. NOTE THE SAFE OPERATIONAL REQUIREMENTS, WARNINGS, AND CAUTIONS. USE THIS PRODUCT CORRECTLY AND WITH CARE FOR THE PURPOSE FOR WHICH IT IS INTENDED. FAILURE TO DO SO MAY CAUSE DAMAGE AND/OR PERSONAL INJURY AND WILL INVALIDATE THE WARRANTY.**

## 1. SAFETY INSTRUCTIONS

### 1.1 ELECTRICAL SAFETY

- WARNING!** It is the responsibility of the owner and the operator to read, understand and comply with the following: You must check all electrical products, before use, to ensure that they are safe. You must inspect power cables, plugs, sockets and any other connectors for wear or damage. You must ensure that the risk of electric shock is minimised by the installation of appropriate safety devices. A Residual Current Circuit Breaker (RCCB) should be incorporated in the main distribution board. We also recommend that a Residual Current Device (RCD) is used. It is particularly important to use an RCD with portable products that are plugged into a supply which is not protected by an RCCB. If in any doubt consult a qualified electrician. You may obtain a Residual Current Device by contacting your Sealey dealer.
- You must also read and understand the following instructions concerning electrical safety.
- 1.1.1 The Electricity at Work Act 1989 requires that all portable electrical appliances, if used on business premises, are tested by a qualified electrician, using a Portable Appliance Tester (PAT), at least once a year.
- 1.1.2 The Health & Safety at Work Act 1974 makes owners of electrical appliances responsible for the safe condition of those appliances and the safety of the appliance operators. If in any doubt about electrical safety, contact a qualified electrician.
- 1.1.3 Ensure that the insulation on all cables and on the appliance is safe before connecting it to the power supply. See 1.1.1 and 1.1.2 and use a Portable Appliance Tester.
- 1.1.4 Ensure that cables are always protected against short circuit and overload.
- 1.1.5 Inspect regularly power supply cables and plugs for wear or damage and check all connections to ensure that none is loose.
- 1.1.6 Important: Ensure that the voltage marked on the appliance matches the power supply to be used and that the plug is fitted with the correct fuse - see fuse rating at right.
- 1.1.7 **DO NOT** pull or carry the appliance by the power cable.
- 1.1.8 **DO NOT** pull the plug from the socket by the cable.
- 1.1.9 **DO NOT** use worn or damaged cables, plugs or connectors. Immediately have any faulty item repaired or replaced by a qualified electrician. When a BS 1363/A UK 3 pin plug is damaged, cut the cable just above the plug and dispose of the plug safely. Fit a new plug according to the following instructions (UK only).
- Connect the GREEN/YELLOW earth wire to the earth terminal 'E'.
  - Connect the BROWN live wire to the live terminal 'L'.
  - Connect the BLUE neutral wire to the neutral terminal 'N'.
  - After wiring, check that there are no bare wires, that all wires have been correctly connected, that the cable outer insulation extends beyond the cable restraint and that the restraint is tight. Double insulated products, which are always marked with this symbol , are fitted with live (brown) and neutral (blue) wires only. To rewire, connect the wires as indicated above - **DO NOT** connect either wire to the earth terminal.
- 1.1.10 Products which require more than 13A are supplied without a plug. In this case you must contact a qualified electrician to ensure that a suitably rated supply is available. We recommend that you discuss the installation of an industrial round pin plug and socket with your electrician.
- 1.1.11 If an extension reel is used it should be fully unwound before connection. A reel with an RCD fitted is preferred since any appliance plugged into it will be protected. The cable core section is important and should be at least 1.5mm<sup>2</sup>, but to be absolutely sure that the capacity of the reel is suitable for this product and for others which may be used in the other output sockets, we recommend the use of 2.5mm<sup>2</sup> section cable.



### 1.2 GENERAL SAFETY

- ✓ Disconnect the sharpener from the mains power before changing accessories, servicing or performing any maintenance.
- ✓ Maintain sharpener and stone in good condition. Check moving parts and alignment. If necessary use an authorised service agent.
- ✓ Replace or repair damaged parts. *Use genuine parts only. Unapproved parts may be dangerous and will invalidate the warranty.*
- ✓ The grinding wheel or stone must only be changed by persons holding an appropriate grinding wheel certificate.
- ✓ Wear approved safety goggles, ear defenders and safety gloves.
- ✓ Remove ill fitting clothing. Remove ties, watches, rings, and other loose jewellery, and contain long hair.
- ✓ Use sharpener in a suitable work area, keep area clean, tidy and free from unrelated materials, and ensure adequate lighting.
- ✓ Maintain correct balance and footing. **DO NOT** over-reach and ensure the floor is not slippery. Wear non slip shoes.
- ✓ Keep non essential persons away from the working area.
- x **DO NOT** operate the sharpener if any parts are missing or the sharpener is damaged.
- x **DO NOT** use the sharpener for a task it was not designed to perform.
- x **DO NOT** operate sharpener where there are flammable liquids or gasses.
- x **DO NOT** get the sharpener wet or use in damp or wet locations.
- x **DO NOT** switch the sharpener on whilst the stone is in contact with the workpiece.
- x **DO NOT** touch the workpiece immediately after sharpening as it will be very hot.
- x **DO NOT** try to cool the sharpening wheel with water or other lubricants.
- x **DO NOT** touch the sharpening disc whilst operating, or whilst plugged into the mains power.
- x **DO NOT** leave the sharpener running unattended.
- x **DO NOT** operate the sharpener when you are tired or under the influence of alcohol, drugs or intoxicating medication.
- x **DO NOT** attach modules if the wheel is still moving and **DO NOT** use without a module in place.
- ✓ The motor is specially rated for intermittent use, use a maximum of 15 minutes continuous use.
- ✓ When not in use switch sharpener off, remove plug from power supply.

## 2. INTRODUCTION & SPECIFICATIONS

Portable electric multipurpose sharpener, aimed at the DIY user. Sharpens all HSS drill bits from 3mm to 10mm, straight edged knives and scissors. Also regrinds chisels and plane blades up to 50mm wide.

Model No: .....SMS2004  
 Input: ..... 230V, 50Hz  
 Free Speed: ..... 6700rpm  
 Wheel Diameter: ..... Ø48mm  
 Minimum Drill Diameter: ..... Ø3mm  
 Maximum Drill Diameter: ..... Ø10mm  
 Weight: ..... 1.65kg

## 3. INSTALLATION

### 3.1 INSTALLATION

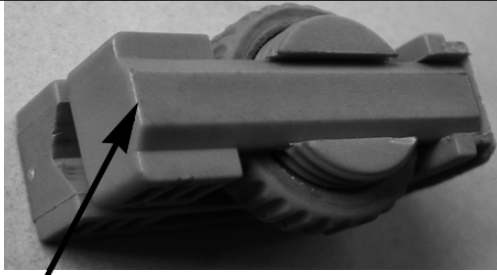
3.1.1 Screw the sharpener securely to a fireproof workbench, using the screwholes in the base as a template.

## 4. OPERATION

### 4.1 HIGH SPEED DRILL SHARPENER (Refer to fig.1).

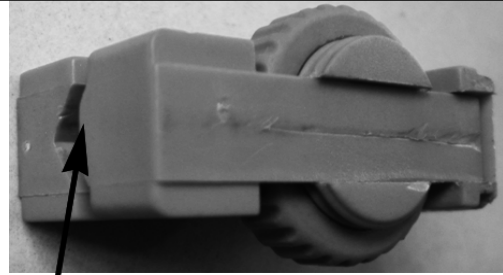


- 4.1.1 Slide module labelled 'High Speed Drill Sharpener' (1) onto the power unit.
- 4.1.2 Remove the clamp from the clamp holder and insert the drill bit (2) to be sharpened (1a). Tighten the clamp lightly to leave the drill bit still free to move.
- 4.1.3 Place the clamp containing the drill bit into the setting slot on the left hand top (see 3 in fig.1), using the grooves in the side to lower it in correctly (1b).
- 4.1.4 Move the drill bit cutting end forward, so that it lays in the V guide and touches the metal end stop (1c).
- 4.1.5 Turn the drill bit until the V guide fully drops over it (1c), all four drill corners should now be touching the V guide sides.
- 4.1.6 Ensure that the drill and holder are fully down in the setting slot. With the drill in this position, tighten the clamping ring (1d).
- 4.1.7 Lift up the V guide and remove the clamp holder and drill bit.
- 4.1.8 Transfer the clamp holder to the sharpening position, on the right hand top(1e), secure it with light finger pressure (1f).
- 4.1.9 Switch the power unit on.
- 4.1.10 Move the clamp holder from side to side, securing with light finger pressure.
- 4.1.11 Remove the drill bit and holder and turn it over to sharpen the other face of the drill (1g).
- 4.1.12 Check that the leading edge of both flutes are equally sharp (1h).
- 4.1.13 Switch the power unit off. Before removing the module, ensure the grinding wheel has stopped.



**Stepped face upwards for bits of Ø3.5mm to 10mm**

**Fig.2**



**Stepped surface downwards for bits Ø3mm to Ø3.5mm**

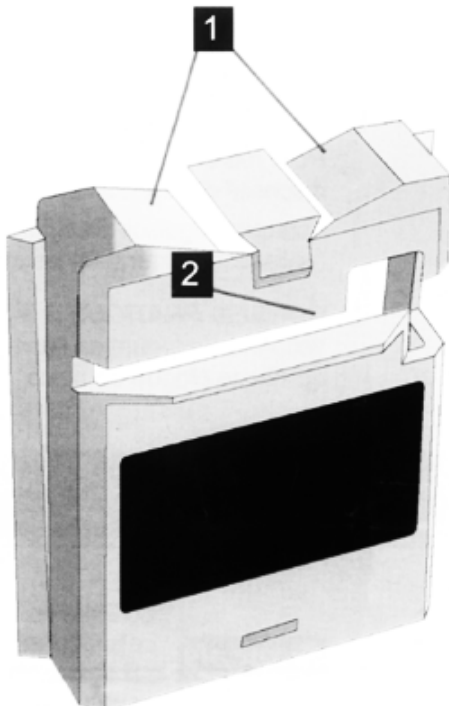
4.1.14 For drill bits of diameter 3mm to 3.5mm, loosen the locknut and pull the clamp out of the block and install it with the stepped surface downwards. See fig.2.

**4.2 KNIFE AND SCISSOR SHARPENER (Refer to fig.3)**

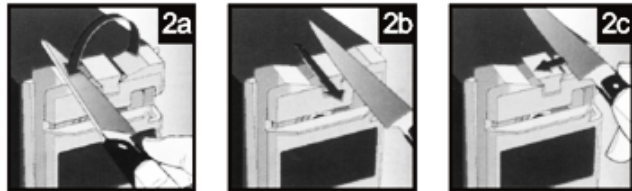
# Knife & Scissor Sharpener

- 1** Knife Sharpening Slots
- 2** Scissor Sharpening Slot

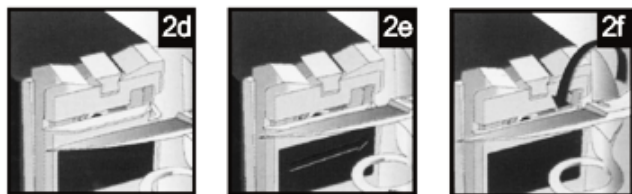
**Fig.3**



## SHARPENING KNIVES



## SHARPENING SCISSORS



This module is suitable for all straight edged, household knives and scissors only.

Do not use serrated edged blades.



### SHARPENING KNIVES

- 4.2.1 Slide module labelled "Knife Sharpener and Scissor Sharpener" onto the power unit.
- 4.2.2 Switch the power unit on.
- 4.2.3 Hold the knife handle towards you and insert the handle end of the blade into the guide slot (2a).
- 4.2.4 As soon as the blade touches the grinding wheel, draw it with light steady pressure across the wheel to the tip, then remove. **DO NOT** press too hard (2b).
- 4.2.5 Insert the second side of the blade into the other top guide slot (2c) and repeat step 4.2.4.
- 4.2.6 Repeat sharpening each side in turn until a clean sharp edge is attained.
- 4.2.7 Switch the power unit off. Before removing the module, ensure the grinding wheel has stopped.

### SHARPENING SCISSORS

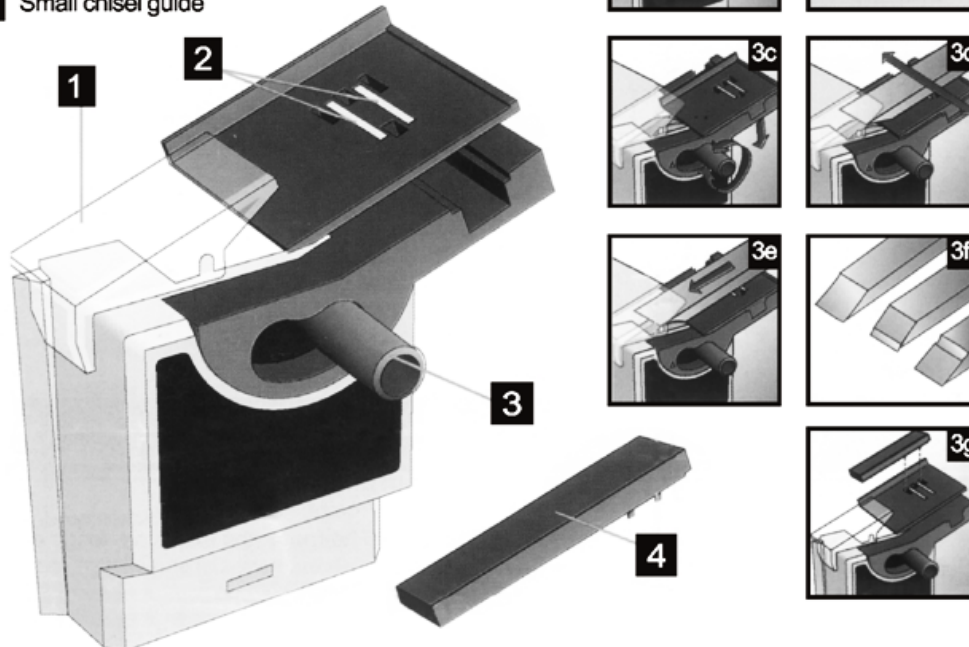
- 4.2.8 Open the scissors fully.
- 4.2.9 Slide the first scissor blade through the front guide slot from left to right (2d), keeping the pivot of the scissors and the other blade to the right hand side.
- 4.2.10 Draw the blade across the grinding wheel from pivot to tip. Use a light steady pressure, **DO NOT** press too hard (2e).
- 4.2.11 Remove and turn scissors over to sharpen the second blade (2f), keep the pivot to the right hand side.
- 4.2.12 Repeat if necessary, until sharp, clean edges are achieved.
- 4.2.13 Switch the power unit off. Before removing the module, ensure that the grinding wheel has stopped.

# Chisel & Plane Sharpener

## SHARPENING CHISELS & PLANE BLADES

- 1 Protective shield for added safety
- 2 Powerful integral magnet to keep blade secure
- 3 Adjustable grinding angle from 20° to 40°
- 4 Small chisel guide

Fig.4



### 4.3 CHISEL AND PLANE SHARPENER (Refer to fig.4)

- 4.3.1 Slide module labelled "Chisel and Plane Sharpener" onto the power unit and ensure protective shield is in position.
- 4.3.2 Place the blade against the back lip of the plate (bevelled side downwards) (3a). The magnet helps hold it in place.
- 4.3.3 The sharpening angle must match the existing bevelled angle on the blade tip (3b).
- 4.3.4 To alter the angle, loosen the angle adjusting knob (3c), adjust the plate angle, then retighten.
- 4.3.5 Make sure the blade edge touches the grinding wheel, then switch the power unit on.
- 4.3.6 Slide the blade and plate with light, steady pressure back and forth across the grinding wheel in a continuous motion (3d). **DO NOT** hold the blade stationary as this causes irregular sharpening.
- 4.3.7 Gradually adjust the blade down the plate while sharpening (3e). **DO NOT** press hard, grind gradually, repeat this step.
- 4.3.8 Remove the blade and make sure the bevelled edge and tip are evenly sharp. If not adjust the grinding angle. **IMPORTANT!** The sharpening angle must match the existing bevelled angle of the blade. This avoids removing too much metal unnecessarily and keeps the blades at their optimum shaving angle (3f).
- 4.3.9 When sharpening thin chisel blades, place the small chisel guide (4) onto the plate to act as a spacer and sharpen as before (3g).
- 4.3.10 Switch the power unit off. Before removing the module, ensure that the grinding wheel has stopped.
- 4.3.11 It is recommended that after grinding, the blade tip is honed on an oil stone.

## 5. MAINTENANCE

- 5.1 Before cleaning disconnect from the mains. Keep clean and free from oil and grease, store in dry conditions.



### Environmental Protection.

Recycle unwanted materials instead of disposing of them as waste. All tools, accessories and packaging should be sorted, taken to a recycle centre and disposed of in a manner which is compatible with the environment.



### WEEE Regulations.

Dispose of this product at the end of its working life in compliance with the EU Directive on Waste Electrical and Electronic Equipment. When the product is no longer required, it must be disposed of in an environmentally protective way. Contact your local solid waste authority for recycling information.

**NOTE:** It is our policy to continually improve products and as such we reserve the right to alter data, specifications and component parts without prior notice.

**IMPORTANT:** No liability is accepted for incorrect use of this product.

**WARRANTY:** Guarantee is 12 months from purchase date, proof of which will be required for any claim.

**INFORMATION:** For a copy of our latest catalogue and promotions call us on 01284 757525 and leave your full name and address, including postcode.



**SEALEY**

**Power PRODUCTS**

Sole UK Distributor, Sealey Group,  
Kempson Way, Suffolk Business Park,  
Bury St. Edmunds, Suffolk,  
IP32 7AR

01284 757500

www.sealey.co.uk

01284 703534

sales@sealey.co.uk